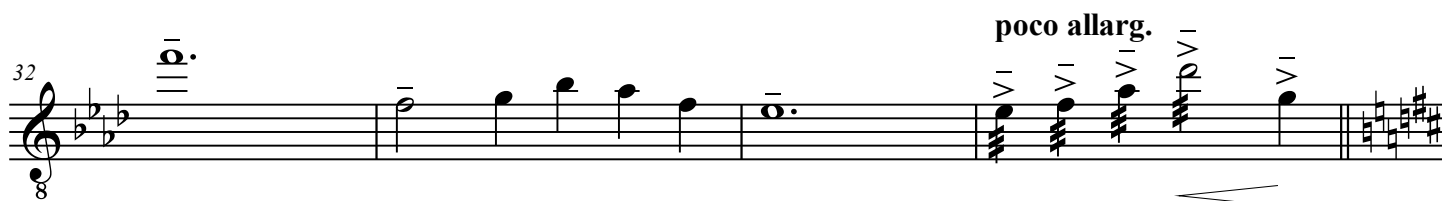
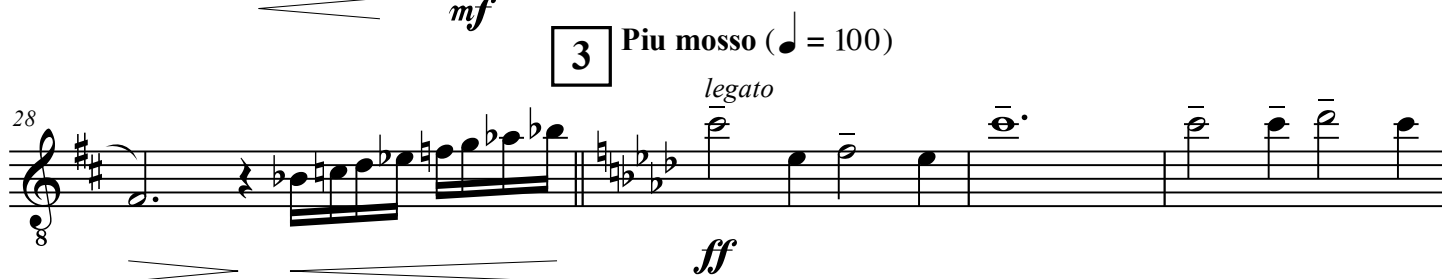
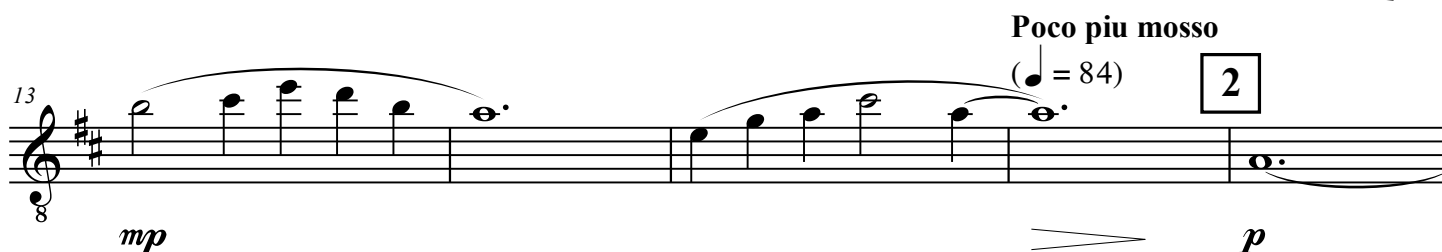
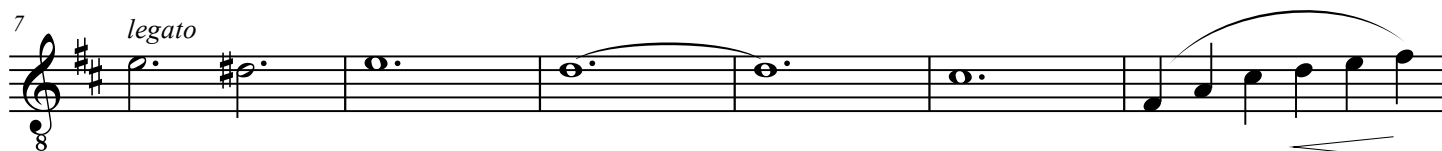


# РУССКАЯ НАРОДНАЯ ПЕСНЯ

## СТЕПЬ ДА СТЕПЬ КРУГОМ

Lento  $\text{♩} = 72$   
sul pont.

**1** Аранжировка Е. Петрова



38

8

*fff* *fff*

Staff 38-39: Treble clef, key of D major. Staff 38 contains a half note D5 with a fermata, followed by a sixteenth-note scale from E5 to A5. Staff 39 continues the scale from B5 to D6. Dynamics: *fff* with crescendo hairpins.

40

8

*ff* *dim.* *legato* *rall.*

Staff 40-43: Treble clef, key of D major. Staff 40 contains a half note D5 with a fermata, followed by a sixteenth-note scale from E5 to A5. Staff 41 continues the scale from B5 to D6. Staff 42 contains a half note D5 with a fermata, followed by a sixteenth-note scale from E5 to A5. Staff 43 contains a half note D5 with a fermata, followed by a sixteenth-note scale from E5 to A5. Dynamics: *ff* with a decrescendo hairpin to *dim.*, then *legato* and *rall.*

5

Meno mosso  
(♩ = 88)

rall. poco a poco

8

*p* *pp*

Staff 44-47: Treble clef, key of D major. Staff 44 contains a half note D5 with a fermata, followed by a sixteenth-note scale from E5 to A5. Staff 45 continues the scale from B5 to D6. Staff 46 contains a half note D5 with a fermata, followed by a sixteenth-note scale from E5 to A5. Staff 47 contains a half note D5 with a fermata, followed by a sixteenth-note scale from E5 to A5. Dynamics: *p* with a decrescendo hairpin to *pp*.

52

sul pont.

8

*pp*

Staff 48-51: Treble clef, key of D major. Staff 48 contains a half note D5 with a fermata, followed by a sixteenth-note scale from E5 to A5. Staff 49 continues the scale from B5 to D6. Staff 50 contains a half note D5 with a fermata, followed by a sixteenth-note scale from E5 to A5. Staff 51 contains a half note D5 with a fermata, followed by a sixteenth-note scale from E5 to A5. Dynamics: *pp* with a decrescendo hairpin.